

Plug-In RF Transformer

50Ω 0.02 to 100 MHz

T1.5-6-X65+
T1.5-6-X65



CASE STYLE: X65
PRICE: \$5.65 ea. QTY (1-9)

+ RoHS compliant in accordance
with EU Directive (2002/95/EC)

The +Suffix identifies RoHS Compliance. See our web site
for RoHS Compliance methodologies and qualifications.

Maximum Ratings

Operating Temperature	-20°C to 85°C
Storage Temperature	-55°C to 100°C
RF Power	250mW
DC Current	30mA

Pin Connections

PRIMARY DOT	4
PRIMARY	6
SECONDARY DOT	3
SECONDARY	1
SECONDARY CT	—
NOT USED	2,5

Features

- excellent return loss
- also available with flat-pack (W38)
& surface mount gull-wing (KK81) leads

Applications

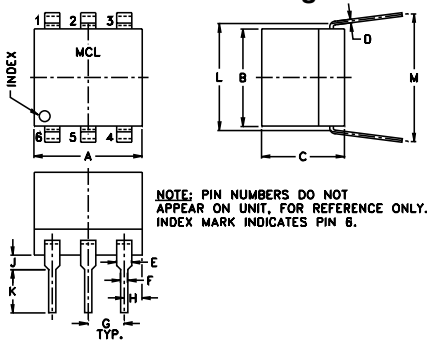
- HV/VHF
- receivers/transmitters
- impedance matching

Transformer Electrical Specifications

Ω RATIO (Secondary/Primary)	FREQUENCY (MHz)	INSERTION LOSS*		
		3 dB MHz	2 dB MHz	1 dB MHz
1.5	0.02-100	0.02-100	0.05-50	0.1-25

* Insertion Loss is referenced to mid-band loss, 0.2 dB typ.

Outline Drawing



Outline Dimensions (inch)

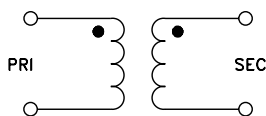
A	B	C	D	E	F	G
.30	.27	.23	.010	.042	.020	.100
7.62	6.86	5.84	0.25	1.07	0.51	2.54

H	J	K	L	M	wt
.05	.04	.11	.300	.35	grams
1.27	1.02	2.79	7.62	8.89	0.50

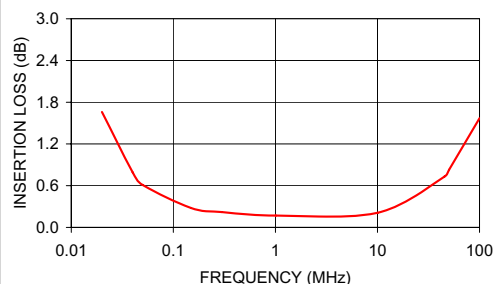
Typical Performance Data

FREQUENCY (MHz)	INSERTION LOSS (dB)	INPUT R. LOSS (dB)
0.02	1.66	10.04
0.04	0.79	14.25
0.05	0.61	15.84
0.15	0.28	24.00
0.30	0.22	28.68
1.01	0.17	33.51
10.03	0.21	25.00
45.28	0.73	13.42
50.37	0.83	12.65
100.00	1.57	6.99

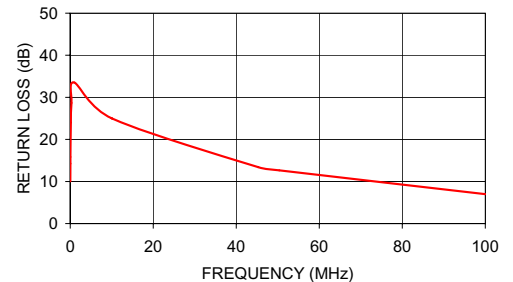
Config. C



T1.5-6-X65
INSERTION LOSS



T1.5-6-X65
INPUT RETURN LOSS



Mini-Circuits®
ISO 9001 ISO 14001 CERTIFIED

ALL NEW
minicircuits.com

P.O. Box 350166, Brooklyn, New York 11235-0003 (718) 934-4500 Fax (718) 332-4661 For detailed performance specs & shopping online see Mini-Circuits web site



The Design Engineers Search Engine Provides ACTUAL Data Instantly From MINI-CIRCUITS At: www.minicircuits.com

RF/IF MICROWAVE COMPONENTS

REV. A
M98898
T1.5-6-X65
IG/TD/CP
070802